

MORE INVISAIR

MORE INVISAIR

Aesthetically
architecturally
integrable for
elegant ventilation
and quiet.

MORE INVISAIR is the revolutionary range of aesthetic diffusers that transforms ventilation into a living comfort experience and a new dimension of design. Elegant, functional and silent solutions designed to integrate to perfection in any space, from renovations to new construction, without ever sacrificing aesthetics.



The range

- . MORE CIRCLE
- . MORE SQUARE
- . MORE LINE
- . MORE COMBILINE
- . MORE GRID

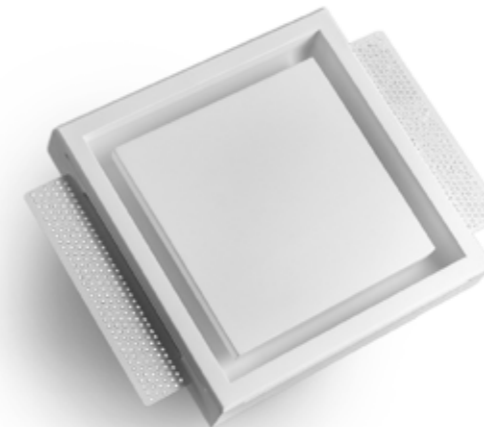
MORE CIRCLE

Round-shaped diffuser with fittings for Ø 100 mm, 125 mm, 150 mm and 160 mm ducts.



MORE SQUARE

Square-shaped diffuser with fittings for Ø 100 mm and 125 mm ducts.



MORE CIRCLE AND MORE SQUARE

The MORE CIRCLE and MORE SQUARE diffusers, made of environmentally friendly material, pure gypsum, blend harmoniously into plasterboard ceilings and walls, blending with the architecture thanks to the possibility of being painted in the same shade as the finish. The result is discreet and refined comfort without visual interruption, perfectly combining functionality and aesthetics.

PLUS

- **Maximum installation versatility:** Diffusers can be connected directly to the air duct or via a flexible duct, discreetly adapting to any design configuration. Suitable for both supply and exhaust.
- **Universal compatibility:** Flexible ducts (75 mm or 90 mm diameter) are perfectly compatible with standard plenums, requiring only 17 cm of space. With low-profile plenum boxes, installation is possible even with only 14 cm of space.
- **Versatility in connections:** Suitable for all types of air duct systems with standard connection diameters: 100 mm, 125 mm, 150 mm and 160 mm.
- **Convenience and efficiency:** Each diffuser is equipped with a practical balance, which ensures perfect airflow control.
- **Architectural Integration:** Paintable and suitable for single-layer, double-layer or custom-thickness plasterboard.
- **Dirt Resistant:** No dirt rings form around the diffusers. MORE CIRCLE and MORE SQUARE are compatible with MORE VMC EVO and MORE DEU systems and can be installed on walls and ceilings.

MORE CIRCLE and MORE SQUARE are compatible with MORE VMC EVO and MORE DEU systems and can be installed on walls and ceilings.



MORE LINE

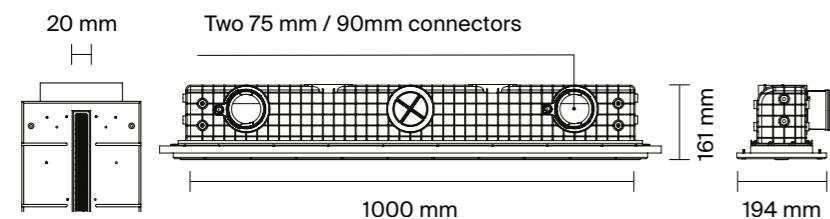
MORE LINE is the ideal solution for those seeking a ventilation system that combines elegance and discretion. Designed to blend seamlessly into environments where design is key, this diffuser fits perfectly to ceilings and plasterboard walls, leaving a subtle minimalist gap that enhances the environment without compromising its aesthetics.

Thanks to its compatibility with 75 mm and 90 mm flexible ducts, it offers great flexibility, adapting to horizontal and vertical installations.

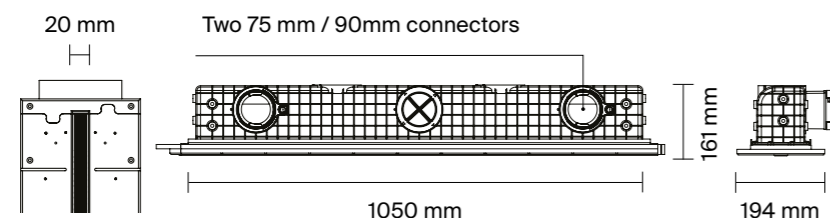
Made of recycled rigid material, MORE LINE diffusers are durable and resistant, ensuring perfect adhesion to plasterboard without the risk of cracking over time.

MORE LINE RANGE: MORE LINE FIX and MORE LINE FLEX

MORE LINE FIX is attached directly to plaster profiles, ensuring quick and easy installation. Thanks to the practical of fixing, it ensures a secure and stable fit, with perfect integration into the ventilation system.



The **MORE LINE FLEX** model, which is also attached to plaster profiles, allows the connection of additional segments, creating longer speaker lines. The innovative LOCK technology enables segments to be joined with great precision and quickly, optimising installation time and improving further the efficiency of the system.



PLUS

- **Design elegante e discreto:** Perfetto per ambienti dove l'estetica è fondamentale, la fessura minimalista si integra armoniosamente con il soffitto o la parete.
- **Installazione versatile:** Compatibile con condotti flessibili da 75 mm e 90 mm, il sistema si adatta a installazioni sia orizzontali che verticali.
- **Tecnologia di connessione avanzata:** L'innovativa tecnologia consente di collegare facilmente segmenti aggiuntivi per creare linee continue di diffusori con grande precisione.
- **Materiali di alta qualità:** Realizzato in materiale rigido riciclato, garantisce un'adesione perfetta al cartongesso e una lunga durata nel tempo, prevenendo crepe.
- **Fissaggio semplice e sicuro:** Per un'installazione rapida e stabile, con un fissaggio sicuro sia su soffitti in cemento che su profili in gesso.
- **Comodità ed efficienza:** Ogni diffusore è dotato di una pratica valvola di bilanciamento, che garantisce un perfetto controllo del flusso d'aria.
- **Integrabilità architettonica:** Verniciabili e adatto per cartongesso a strato singolo, doppio o con spessore personalizzato del flusso d'aria.

MORE LINE è compatibile con i sistemi MORE VMC EVO e MORE DEU ed è installabile a parete e a soffitto.

PLUS

- **Elegant and unobtrusive design:** Perfect for rooms where aesthetics are paramount, the minimalist slot integrates harmoniously with the ceiling or wall.
- **Versatile Installation:** Compatible with 75 mm and 90 mm flexible ducts the system to suit both horizontal and vertical installations.
- **Advanced connection technology:** Innovative technology enables easily connect additional segments to create continuous lines of diffusers with great precision.
- **High-quality materials:** Made of recycled rigid material, it ensures perfect adhesion to plasterboard and long service life, preventing cracks.
- **Simple and secure fastening:** For quick and stable installation, with a secure fastening on both concrete ceilings and plaster profiles.
- **Convenience and efficiency:** Each diffuser is equipped with a practical balancing valve, ensuring perfect airflow control.
- **Architectural Integration:** Paintable and suitable for ply plasterboard single, double or custom airflow thickness.

MORE LINE is compatible with MORE VMC EVO and MORE DEU systems and can be installed on walls and ceilings.

MORE LINE



MORE
LINE

MORE LINE



MORE
LINE

MORE COMBILINE

MORE COMBILINE rectangular diffusers are the perfect solution for rooms with heights between 2.7 and 5.0 meters, capable of handling temperature differences of up to $\pm 10^{\circ}\text{C}$. Flush or projecting installation allows for the Coanda effect for even air distribution without compromising the aesthetics of the room. With a refined and functional design, MORE COMBILINE diffusers are ideal for residential spaces, offices, commercial environments, and any situation that requires a perfect combination of aesthetics and performance.

PLUS

- **Coanda effect:** Air is evenly distributed along surfaces, optimizing comfort and air conditioning efficiency.
- **Architectural integration:** Concealed perimeter frame for seamless integration into the environment.
- **Adaptability:** Adjustable front plate that allows airflow to be adjusted to specific distribution needs.
- **Maximum installation versatility:** Suitable for both supply and return air.
- **Dynamic deflection:** Adjustment of the front plate allows the angle of airflow to vary, ensuring maximum versatility and comfort in all seasons.

MORE COMBILINE is compatible with MORE VMC EVO, MORE DEU, MORE SILENT AIR and MORE DEA systems and can be installed on walls and ceilings*.

*Recommended installation for MORE DEA and MORE SILENT AIR.

It is recommended to verify the type of installation with the technical consultant.

MORE COMBILINE



MORE GRID

MORE GRID supply vents are the ideal solution for wall or duct mounting, perfect for a horizontal air throw. Equipped with individually adjustable movable fins, they are available in both single- and double-order versions. Their aerodynamic design, with a pitch of 20 mm, optimizes airflow efficiency, while the option of choosing between fins parallel to the smaller side or the larger side allows air distribution to be tailored to the specific needs of the room.

PLUS

- **Discreet design:** 25 mm perimeter frame with 45° cut-out for a sleek design.
- **Maximum installation versatility:** Easy and versatile fixing with concealed springs for duct or plain frame, or corrugated masonry counterframe upon request.
- **High-quality materials:** Made of anodized extruded aluminum profiles, available in natural finish or painted RAL 9016.
- **Convenience and efficiency:** High airflow efficiency due to aerodynamic design with 20 mm pitch that maximizes efficiency and flow control.
- **Air orientation customization:** Individually adjustable movable fins, available in two configurations to perfectly match the needs of the environment.
- **Application versatility:** Suitable for a wide range of environments, residential, commercial and industrial, where precise airflow control is essential.

MORE GRID is compatible with MORE VMC EVO, MORE DEU, MORE SILENT AIR and MORE DEA systems and can be installed on walls* and ceilings.

*Recommended installation for MORE DEA and MORE SILENT AIR.

It is recommended to verify the type of installation with the technical consultant.

RBM spa reserves the right to improve and change the products described and relevant technical data at any moment and without prior notice. The information and pictures contained in this document are intended to be provided for information purposes only and are not binding and in any case do not exempt the user from scrupulously following current regulations and good engineering standards.

03/2025

MORE

Milan

Via Solferino, 15
20121 Milan (MI) Italy
T. +39 0249631136

Brescia

Via Industriale, 12/14
25075 Nave (BS) Italy
T. + 39 0300984315

info@rbmmore.com
rbmmore.com



